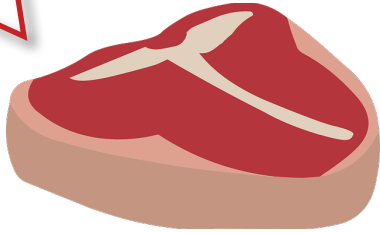


DINOSAURS

carnivores vs. herbivores

FUN FACTS FOR KIDS



CARNIVORES (Meat-Eaters)

- Meat-eaters had sharp, deadly claws used to kill their prey.
- Carnivores often had large, strong jaws and sharp-edged teeth for slicing meat.
- Meat-eaters had bigger brains, better vision, and could run faster than plant eaters.
- They probably had good eyesight and a good sense of smell.
- Most carnivores were bipeds, meaning they walked on two feet.
- Most meat-eaters had long, strong legs for running quickly to catch prey.



HERBIVORES (Plant-Eaters)

- There were more plant-eating dinosaurs than meat-eating dinosaurs.
- Plant-eaters had various shaped teeth all good for eating vegetation.
- Most herbivores traveled in herds for safety from potential predators.
- Plant-eaters didn't have sharp teeth or claws like their predators did so it was difficult for them to fight back.
- However, herbivores had various ways of protecting and defending themselves, including some which had:
 - armored plates/body armor
 - a clubbed tail
 - spikes on their back
 - horns
 - whip tail
 - claws on their thumbs